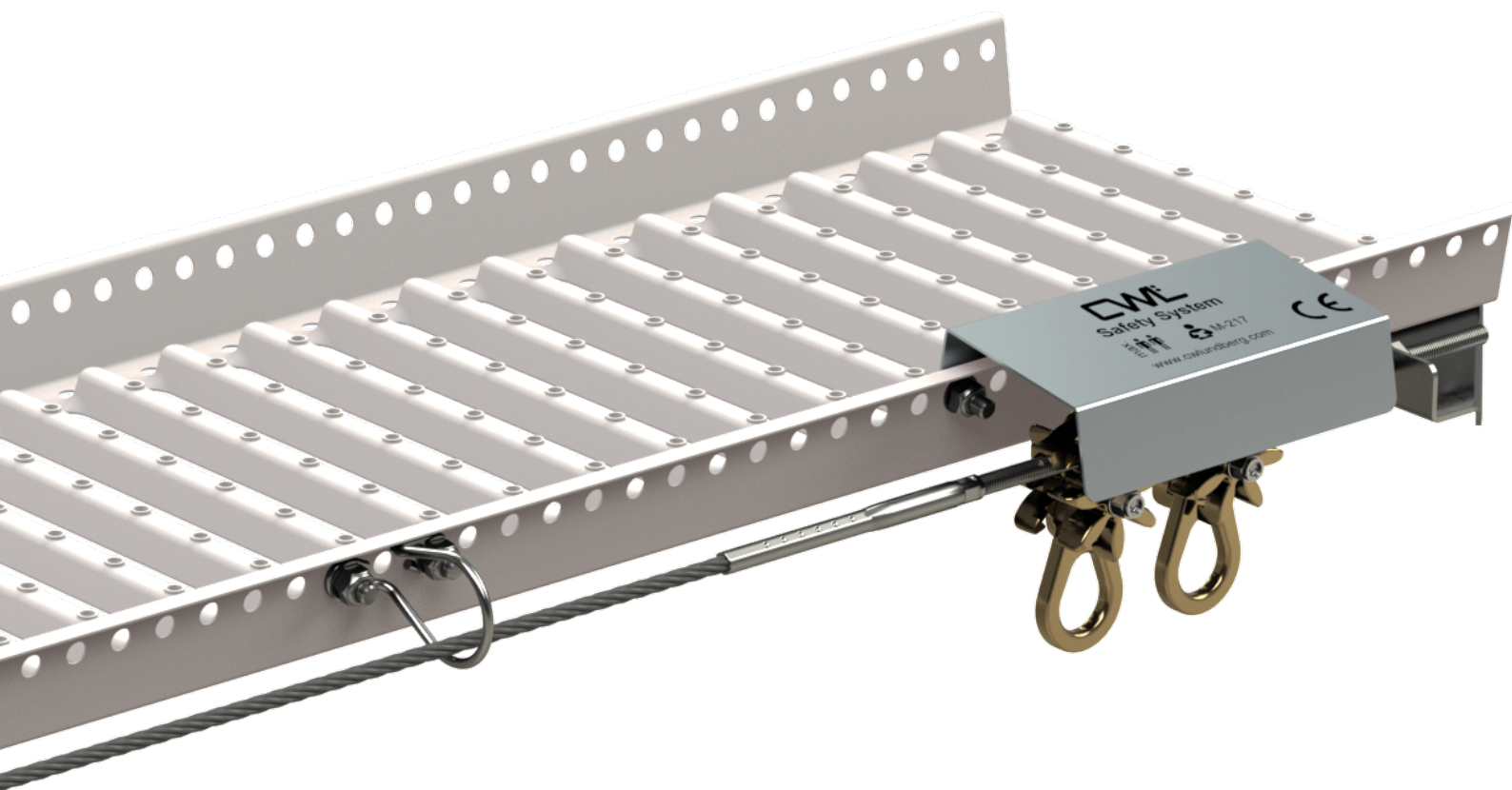




# Product Catalogue



# Table of Contents

Approved roof safety .....	3
Walkway .....	4
Roof Ladder.....	5
Slipguard for ground ladder .....	5
Roof step .....	6
Façade ladder .....	7
Ridge/roof foot rail and snow fence.....	8
Snow stopper .....	9
Ice-stop.....	9
CWL Safety System - Wire.....	10
CWL Safety System - Wire system on roof .....	10-11
CWL Safety System - Wire system on CWL roof safety .....	12
CWL Safety System - Safety rail .....	13
Anchor loop and ridge rail 1 m .....	14
Information sign, roof access .....	14
Rail around roof hatch and skylight.....	15
Anchor loop flat roof .....	15
Sod roof grapple.....	15
Chimney strap .....	16
Touch-up paint .....	16
Brackets .....	17
Brackets .....	18
Brackets .....	19
ÅF pack - Roof safety kit .....	20
Colour chart.....	21
Bolt kits and EPDM .....	22-23
Guarantee .....	24

## Roof safety in a variety of colours

Oxide red	RAL 3009	In-stock
Graphite grey	RAL 7024	In-stock
Jet black	RAL 9005	In-stock
Anthracite grey	RAL 7016	In-stock

Colours according to the colour chart available without surcharge, other colours are tendered.

COPYRIGHT © CWL 2022-06

This brochure is protected by copyright and must not be copied or reproduced without the written consent of CW Lundberg AB. The copy prohibition applies to individual images and texts, entire sections as well as the document in its entirety. This information is subject to changes in the construction, design or documentation made after this date.

# Approved Roof Safety

According to the applicable EU statutes, CE-labelled products shall be covered by a Declaration of Performance. CW Lundberg provides Declarations of Performance for all products encompassed by any form of standard or norm.

Our products are CE-labelled and/or P-marked except for roof steps, which are type-approved.



CE-labelled building products meet European standards and are approved for the anchoring of personal fall protection equipment.



Technical Research Institute of Sweden (SP)

P-marked building products meet Swedish standards and are approved, except for the Slipguard for ladder, for the anchoring of personal fall protection equipment.

Satisfies the load requirements as stated in EN 516 and EN 517.



Austrian Standards Institute (ÖN)

Systems for snow protection for roof pitches up to 60°.



The fork-shaped *Gaffelmärket* is a guarantee that the manufacturing has been inspected by the relevant Swedish authority and that the product meets the requirements set out in Swedish building regulations.

## Important Information:

The approval and guarantees are only valid if:

- one follows the manufacturer's installation instructions.
- uses the manufacturer's original parts.

Brackets, tubes, profile gratings and fasteners that constitute the constructions must not be replaced or substituted with those from another manufacturer.



# Walkway



A walkway should be equipped with a CWL Safety System wire for the anchoring of personal fall protection. The wire system allows one to move along the entire length of the walkways without having to reconnect the safety line.

The walkway, with or without a wire system, is CE-labelled and satisfies EN 516 Class 2 Type B.

## Walkway

Walkway 1.2 m	430012
Walkway 2.4 m	430000
Walkway corner 90° 2 x 2.4m	<b>430094</b>
Diagonal strut, walkway	<b>430065</b>
Upper section, bridge bracket	<b>430010</b>
Bolt kit M10 x 20 6 pcs	420009P
<i>(for 3 pcs extensions, 2 pcs brackets or 3 pcs diagonal struts)</i>	

## Guardrail for walkway

Stanchion, guardrail walkway/roof ladder 1,1 m	100307
Bolt kit, guardrail walkway/roof ladder	430034P
End bracket, guardrail incl. screws	430021

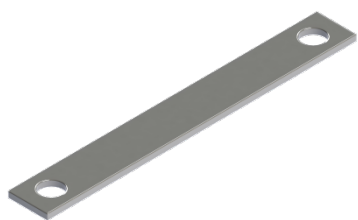
*Rail tubers, see page 8*

## CWL Safety System

*See page 12*

## Pennant position-/snow depth indicator

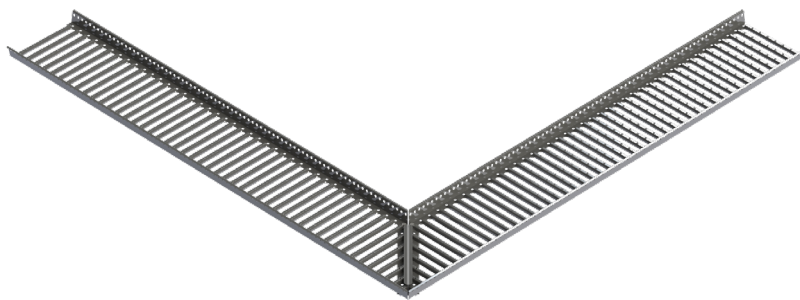
Pennant with snow-depth indicator	480960
Bolt kit, pennant 5 pcs	480670P



430065



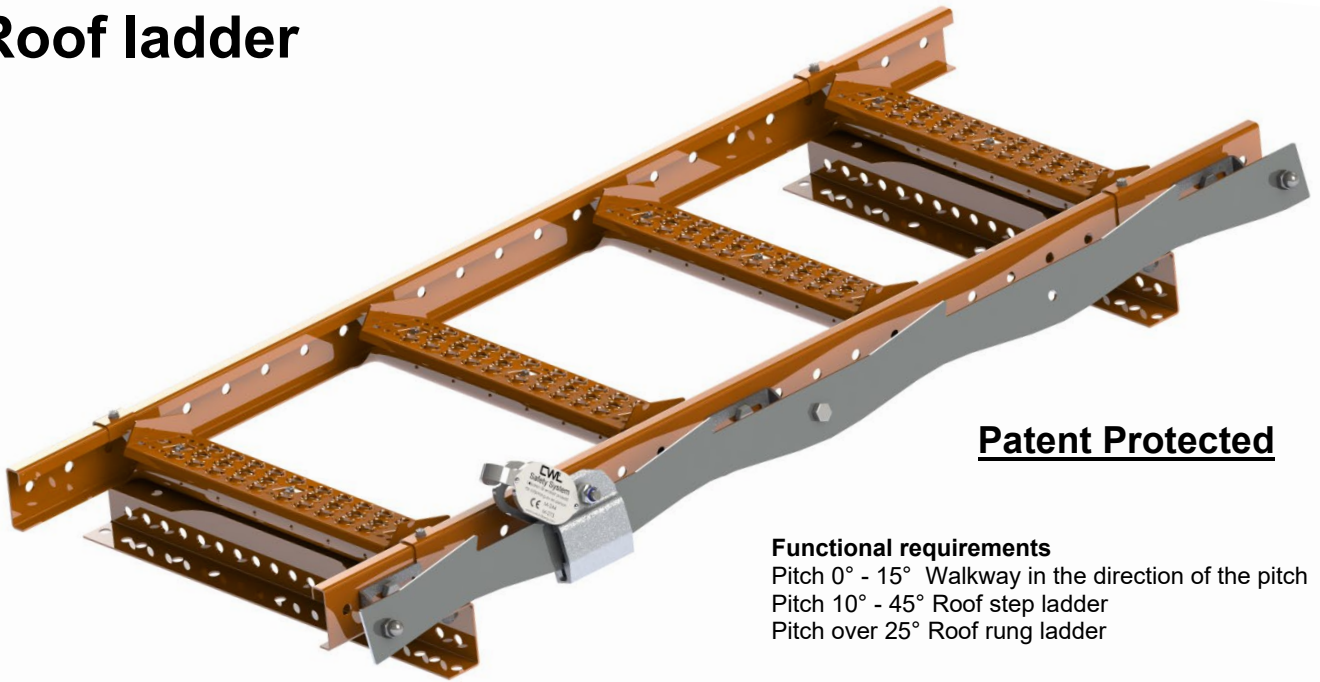
430010



430094



# Roof ladder



## Patent Protected

### Functional requirements

Pitch 0° - 15° Walkway in the direction of the pitch  
Pitch 10° - 45° Roof step ladder  
Pitch over 25° Roof rung ladder

Roof ladders should be equipped with a CWL Safety System, rail for the anchoring of personal fall protections. The rail system allows one to move along the entire length of the roof ladder without having to reconnect the safety line.

The roof ladder, with or without a wire system, is CE-labelled and satisfies EN 516 Class 12951.

### Roof ladder

Roof/façade ladder 1.5 m  
Roof/façade ladder 2.4 m  
Extension kit, roof/façade ladder  
Bolt kit Roof/façade ladder  
Step, roof ladder  
Bolt kit self-tapping screws 6 pcs  
(for 2 steps)

### Item no.

470270  
470271  
470285P  
470260P  
**470281**  
420012P

### Slipguard for ground ladder

Slipguard, roof ladder  
Slipguard, walkway in direction of pitch  
Bolt kit M10 x 20 6 pcs  
(for 3 pcs slipguard, roof ladder)

### Item no.

470112  
470110  
42009P

### Pennant position-/snow depth indicator

Pennant with snow-depth indicator  
Bolt kit, pennant 5 pcs

480960  
480670P

### Walkway on pitched roofs

Walkway 1.2 m  
Walkway 2.4 m  
Bolt kit M10 x 20 6 pcs  
(for 3 pcs extensions or 3 pcs brackets)

430012  
430000  
4200009P

### CWL Safety System

See page 13

### Guard rail for roof ladder

Stanchion, guardrail walkway/roof ladder 1,1 m 100307  
Adapter kit, guardrail roof ladder 470230P  
End bracket, guardrail incl. screws 430021

Rail tubes, see page 8



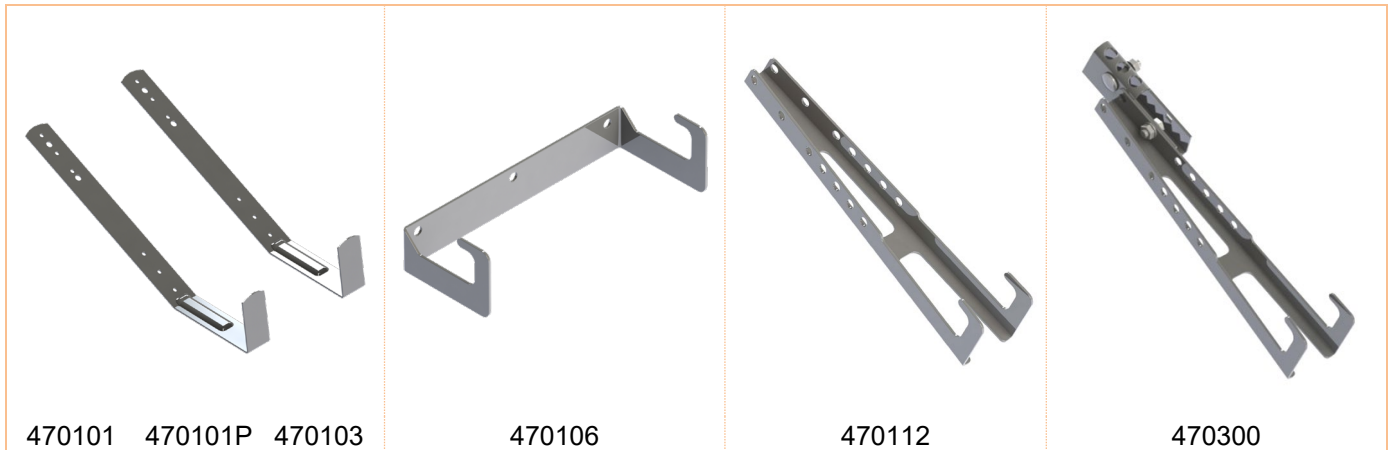
470281

# Slipguard for ground ladder

Slipguard, roof tiles/profiled sheet metal roof incl. screws  
 Slipguard, roof tiles/profiled sheet metal roof incl. screws 100 pcs  
 Slipguard, flat roofs incl. screws  
 Slipguard façade  
 Slipguard roof ladder  
 Slipguard walkway in direction of pitch  
 Bolt kit M10 x 20 6-pack  
 (for 3 pcs slipguard roof ladder)  
 Slipguard, folded sheet metal roof

## Item no.

**470101**  
**470101P**  
**470103**  
**470106**  
**470112**  
 470110  
 420009P  
  
**470300**



# Roof step

## Roofing tiles

Batten step 2-bulge CONC 1" C-300  
 Batten step 2-bulge CONC 2" C-300  
 Batten step 2-bulge CLAY/1-CONC BTG 1" C-240  
 Batten step 1-bulge CLAY 1" C-220  
 Batten step 2-bulge CONC C-300\*  
 Batten step 2-bulge CLAY/1-bulge CONC C-240\*  
 Batten step 1-bulge CLAY C-220\*  
 Bending tool, batten step

## Item no.

450000  
 450001  
 450002  
 450003  
**450020**  
 450022  
 450023  
 450032  
 \* Batten steps for concrete and clay tiles are adjusted with a simple grasp of the hand for 1" or 2" battens.)

## Profiled Sheet Metal Roofs

Roof step, profiled sheet metal roof  
 (Come 15 pcs in a carton. Roof steps fit roof profiles with a maximum C-C distance of 280 mm between the tops or the profiles.)

## 450050



# Façade ladder

## Façade ladder

Roof-/façade ladder 1.5 m

Roof/façade 2.4 m

Extension kit roof/façade ladder

## Item no.

470270

470271

470285P

## Brackets

Bracket kit, façade ladder A-220

410106

Bracket kit, façade ladder A-400

410109

Bracket kit, façade ladder A-500

410232

Bracket kit, façade ladder A-600

410043

Bracket kit, façade ladder A-800

**410044**

Bracket kit, façade ladder A-1000

410045

## Bracket mounts

Attachment plate façade ladder

**410002**

Bolt kit, attachment plate sheet metal façade 2 pcs

410185P

Bolt kit, attachment plate wood façade 2 pcs

410186P

## Back guard and accessories

Pair of handrails, façade ladder 1280 mm

**100322**

Bolt kit, handrails

490031P

Bracing kit, handrails, adjustable

490025

Back guard bracket, façade ladder iØ 650 mm

490506

Bolt kit, back guard bracket

490017P

Bracing kit back guard 900 mm

490004

Standing platf. faç. ladder excl scr 300 x 440 mm

**470411**

Foldable landing, faç. ladder comp. 390 x 410 mm

**470400**

Grapple set, façade ladder

470135P

Lockable hatch back guard incl. lock

490505



## CWL Safety System

See page 13

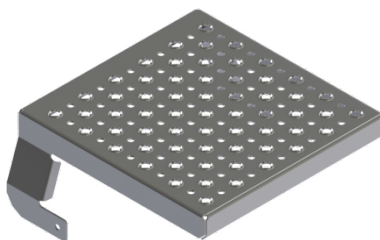
**NEW!**



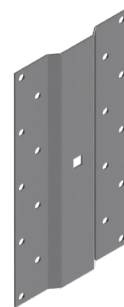
100322



470411



470400



410002



410044

# Ridge-/eaves rail and snow fence



Ridge-/eaves rail and snow fence are approved for anchoring personal fall protection. **Patent Protected**

When planning and installing a snow fence, the design must be based on actual snow loads.

## Rail tubes

Rail tube 2.4 m  
Bolt kit, self-tapping screws 6 pcs  
(for 6 pcs rail tube extensions)  
Locking kit rail tube/profiled grate  
Angle tube 90°  
Angle tube, other angle 0-90°  
Contact us about your desired angle tube.

**Item no.**  
**420014**  
420012P  
  
420010P  
**420026**  
420028

## CWL Safety System

For ridge rails and snow fences, 3-tube, see page 12.

## Profiled grating for snow fence

Profiled grating, snow fence 2.345 m  
Profile grating, snow fence 1.255 m  
Locking kit, rail tubes/profile grating  
Gutter valley plate 180 mm  
Bolt kit M10 x 20 6 pcs  
(for 3 pcs extensions or 1 pcs gutter valley plate)

**420033**  
**420038**  
420010P  
**410274**  
420009P

## Ice-stop

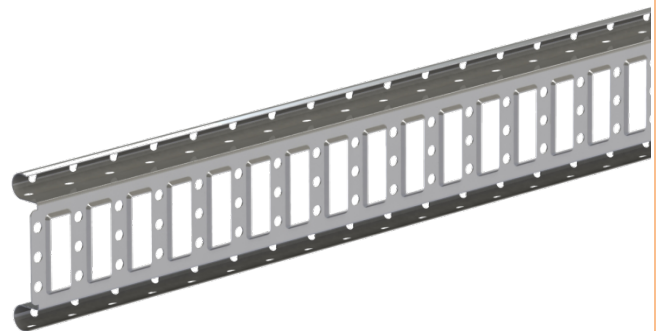
Ice-stop rail tube/profiled grating 50 pcs grey 420053

## Pennant position-/snow depth indicator

Pennant with snow-depth indicator 480960  
Bolt kit, pennant 5 pcs 480670P



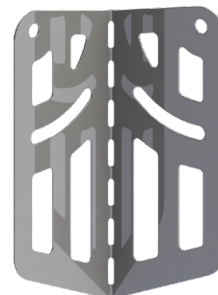
420014



420033 420038



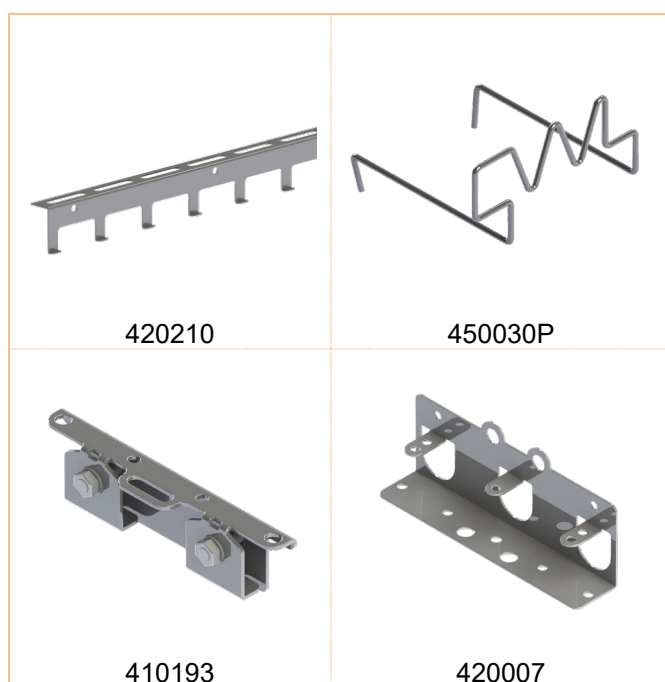
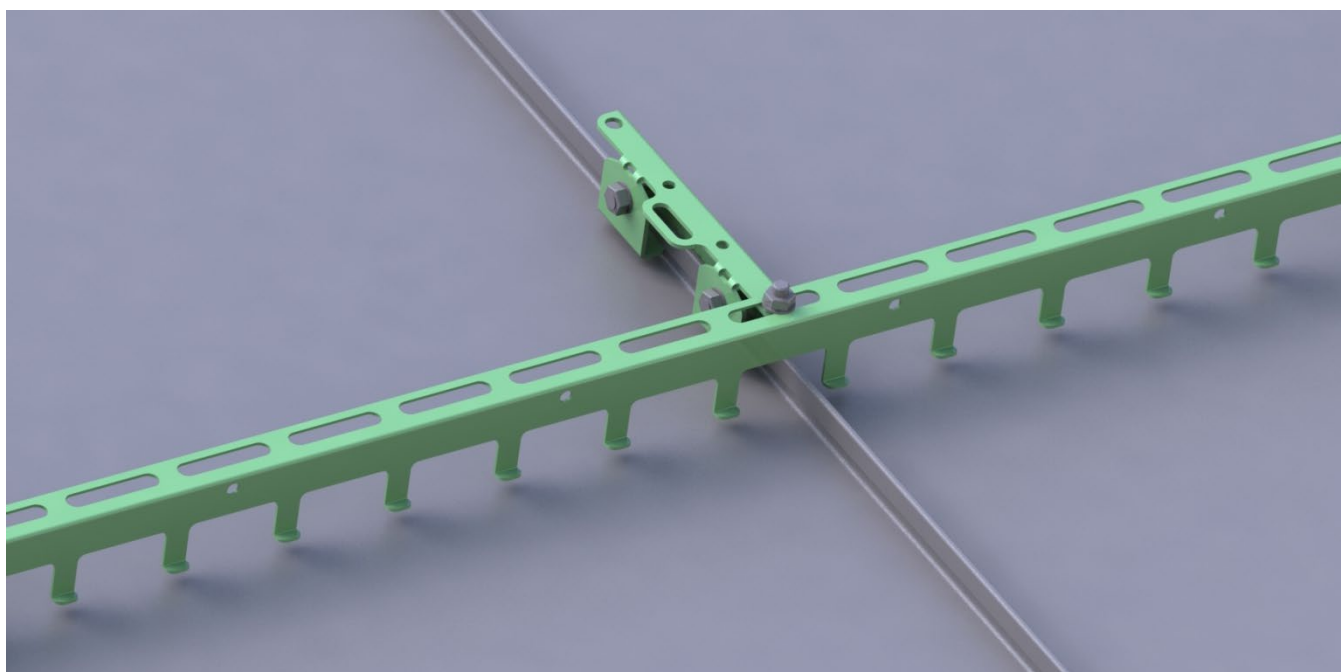
420026



410274



# Snow stopper



## Roofing tiles

CWL grapples, roofing tiles 50 pcs

**Item no.**

**450030P**

## Folded sheet metal roof and pre-fabricated panel roofs

Rake, snow stopper 1.290 m

**420210**

Fold mount, snow stopper rake

**410193**

Bolt kit M10 x 20 6 pcs

**420009P**

Extension kit, roof ladder

**470018P**

*(Can be used for angle extensions of snow stopper, rake)*

## Profiled sheet metal roof

Bracket snow stopper tube prof. sheet m. roof

**420007**

Bolt kit, bracket snow stopper

profiled sheet metal roof 5 pcs

**420193P**

*Rail tubes, see page 8*

## Membrane roof and shingled roof

Bracket, snow stopper tube prof. sheet/flat roof

**420007**

Bolt kit bracket snow stopper flat roof 5 pcs

**420170P**

*Rail tubes, see page 8*

## Pennant position-/snow depth indicator

Pennant with snow-depth indicator

**480960**

Bolt kit, pennant 5 pcs

**480670P**

# Ice-stop



**Item no.**

**420053**

Ice-stop, rail tube/profiled grating grey  
*(Come 50 pcs to a carton)*

**420052**

Ice-stop gutter valley incl screws grey  
*(Come 50 pcs to a carton. Only for CPI roofs)*



# CWL Safety System – Wire

Under the collective name of CWL Safety System, we market all our own make of anchoring, as well as wire systems and rail systems. Each continuous length is approved for the anchoring of two people at the same time.

Wires can be made to order or be extended to any length by using fixed wire lengths.



## Wire runner

CWL wire runner PRO  
CWL wire runner LIGHT

**Item no.**  
**490167**  
490117

## Fixed wire lengths

Wire M-F 2 m  
Wire M-F 3 m  
Wire M-F 5 m  
Wire M-F 9 m  
Wire M-F 14 m  
Wire M-F 20 m  
Wire M-F 30 m  
Wire corner M-F 1+1 m

430243  
430244  
430245  
430246  
430247  
430248  
430249  
490226



490167



490185

# CWL Safety System – Wire system on roof

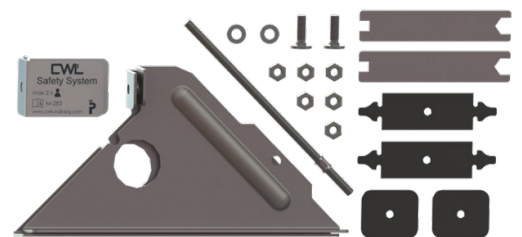
End bracket kit standalone wire  
Protective plate end bracket PRO  
Protective plate wire control PRO  
Mounting kits standalone wire corner PRO  
Threaded pole wire end M10 x 1000 mm A2

**Item no.**  
**430240**  
**490196**  
**490198**  
490224  
490202

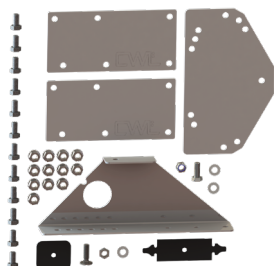
## Pennant position-/snow depth indicator

Pennant with snow-depth indicator  
Bolt kit, pennant 5 pcs

480960  
480670P



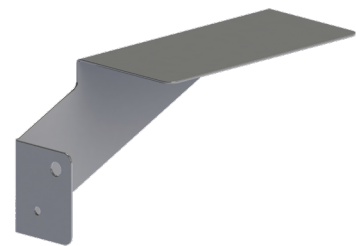
430240



490224



490196



490198

## Flat roofs

Wire flat roof PRO\*  
Mounting plate waterproof membrane  
Wire control flat roof PRO

### Item no.

430217  
410115  
430242



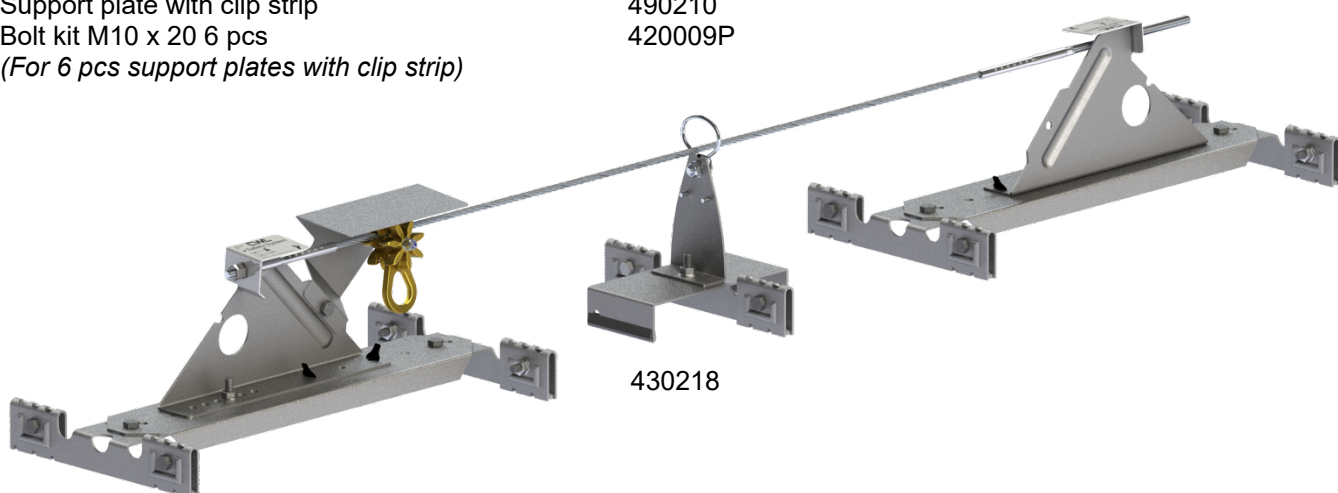
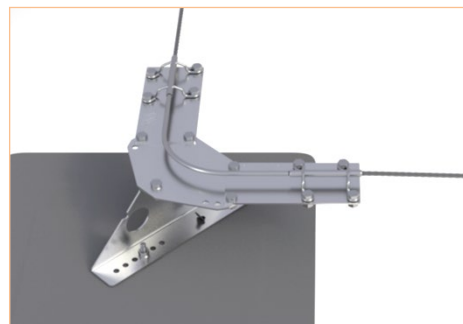
430217

## Double folded sheet metal roofs

Wire double-folded PRO\*  
Mount wire double-folded  
Wire control folded sheet metal roof PRO  
Support plate with clip strip  
Bolt kit M10 x 20 6 pcs  
(For 6 pcs support plates with clip strip)

### 430218

490206  
490181  
490210  
420009P



430218

## Profiled sheet metal roof

Wire profiled sheet metal roof PRO\*\*  
Mounting plate wire profiled sheet metal roofs  
Bolt kit mounting profiled sheet metal roofs  
Wire control profiled sheet metal roof PRO  
Wire control flat roof PRO

### 430219

490208  
490204P  
430252  
430242



430219

\* Design of the item varies depending on the wishes of the customer.

Contact your retailer for more information

# CWL Safety System –

## Wire system on CWL roof safety

CWL Safety System for walkways come in PRO and LIGHT varieties. The wire system is approved for the anchoring of two people at the same time.

### Walkway

Wire walkway PRO\*

Wire walkway LIGHT\*

End bracket kit wire walkway

Wire control walkway PRO\*

Wire control walkway LIGHT\*

Bolt kit M10 x 25 4 pcs

(For two wire controls)

Mounting plate, wire corner PRO walkway

Bolt kit M10 x 20 6 pcs

(2 pcs per wire corner)

### Item no.

**430215**

**430216**

430270

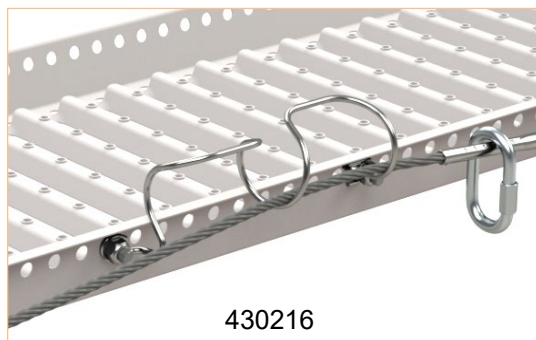
490104

490130

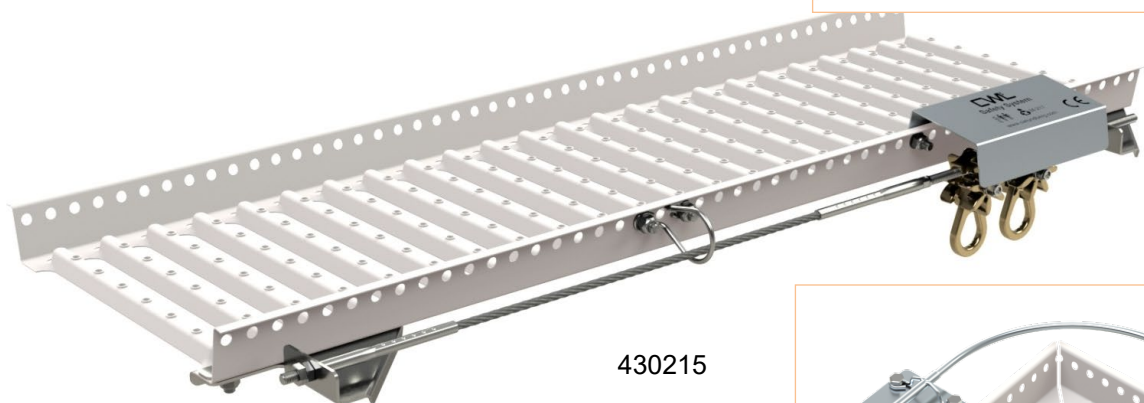
490229p

490190

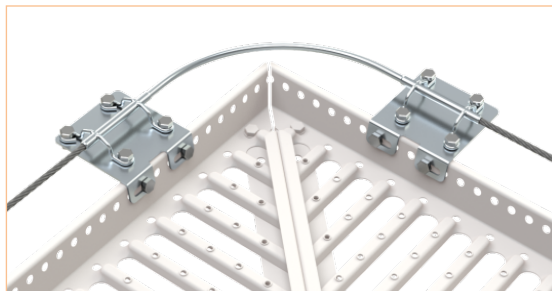
420009P



430216



430215



### Ridge rail and snow fence, 3-tube

Wire ridge rail PRO\*

End bracket kit wire ridge rail

Wire control ridge rail PRO\*

Mounting plate, wire corner PRO ridge rail

Bolt kit, wire corner PRO ridge rail

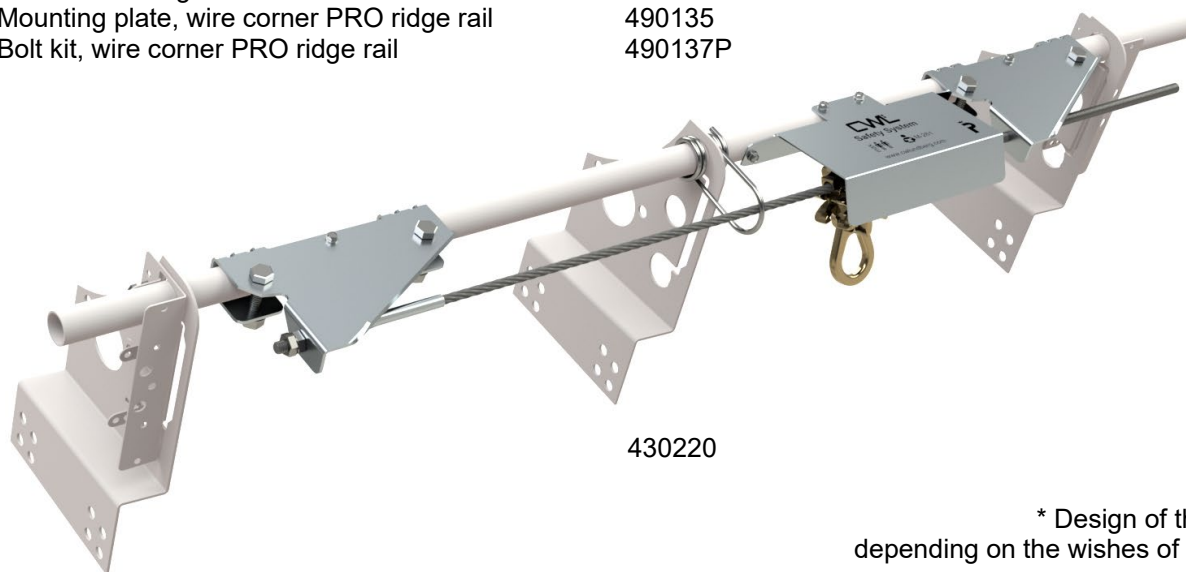
**430220**

430271

490080

490135

490137P



430220

\* Design of the item varies depending on the wishes of the customer.

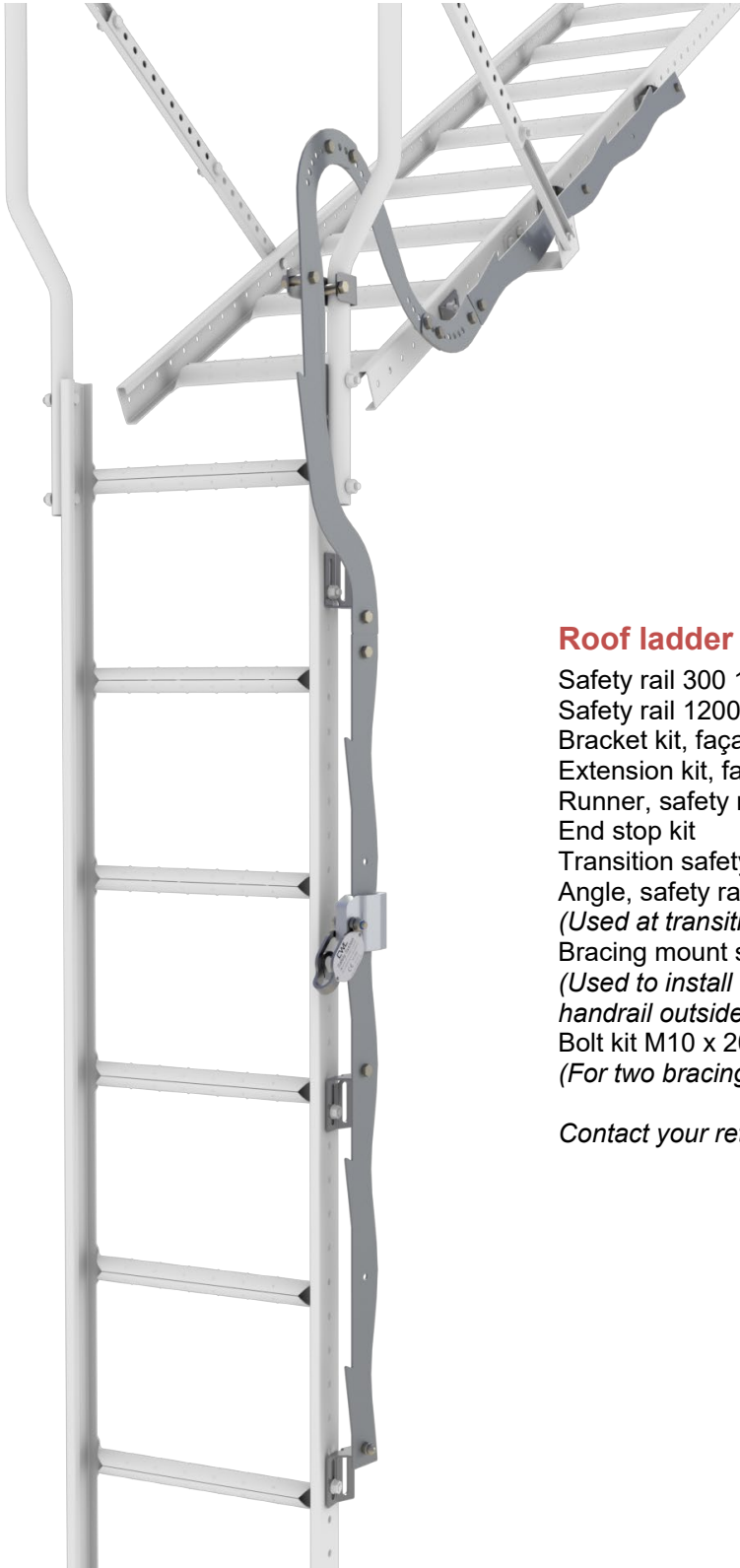
Contact your retailer for more information

# CWL Safety System – Safety rail

Continuous anchoring for roof ladder and façade ladder.

Each continuous length is approved for the anchoring of two people at the same time.

## Patent Protected



### Roof ladder and façade ladder

	Item no.
Safety rail 300 1.2m	490060
Safety rail 1200 1.2m	490065
Bracket kit, façade ladder	490061P
Extension kit, façade ladder	490063P
Runner, safety rail	<b>490064</b>
End stop kit	490075P
Transition safety rail façade-to-roof	<b>490174</b>
Angle, safety rail 15-45° (Used at transitions of rails on staggered roofs.)	490055
Bracing mount safety rail (Used to install the brace to the handrail outside of the rail.)	490141
Bolt kit M10 x 20 6 pcs (For two bracing mounts)	420009P

Contact your retailer for more information



# Anchor loop and ridge rail 1 m - Anchoring of Personal Fall Protection

The anchor loop, for the attachment of personal fall protection equipment, may substitute for a ridge rail when the roof pitch is less than 6° or as a supplement in the roof corners 2 m from each roof edge where the pitch is less than 25°. An anchor loop shall be installed on mounting plate for bitumen membrane roofs.

A pennant with a snow-depth marking makes it possible to find anchor points under the snow. The pennant can be attached directly to the anchor loop or with a special bolt kit to the mounts to existing roof safety products.

## Membrane and shingle roof

Anchor loop, flat roof

Anchor loop, flat roof signal red

Bolt kit anchor loop 5 pcs

### Item no.

420039

**420239**

410132P

Pennant with snow-depth indicator

**480960**

## Roofing tiles, folded sheet metal roof, pre-fabricated panel roof and profiled sheet metal roof

Rail tube 1 m

420003

Locking kit rail tube/profile grating

420010P

Pennant with snow-depth indicator

**480960**

Bolt kit, pennant 5 pcs

480670P



# Information sign at roof access

Upon a new installation of in connection with an inspection of CW Lundberg's roof safety, an information sign, in accordance with Industry Standard - Roof Safety, shall be put up and filled in with the information about the installer, installation date and inspections performed.

The sign provides information on approved fixed anchoring devices for personal fall protection equipment.

The information sign is placed conspicuously in connection with the roof access.

Information sign, roof access

### Item no.

**490500P**



490500P



# Rail around roof hatch and skylight

Base kit, rail roof hatch 3 sides  
(excl. Mount and upper rail tubes)  
Stanchion, rail roof hatch complete  
(for extension of rail over 1800 mm)  
Extension kit, skylight  
(for extension of base kit to a 4-sided rail)

Item no.

440060

440070

440062

Rail tubes, see page 8



440060



440070

# Guard rail for flat roof

Shall be installed on our mounting plate.

## Membrane and shingle roof

Stanchion, guard rail flat roof 1.1 m  
Connection bracket, guard rail incl. screw  
Bolt kit, stanchion flat roof 5 pcs

item no.

430030

430021

430026P

Rail tubes, see page 8



430021



430030

# Sod roof grapple

Sod roof grapples are used when laying green roofs

## Sod roof grapple

Sod roof grapple black  
(Come 20 pcs to a carton)

Item no.

610295



610295

# Chimney strap

## Chimney strap

Chimney strap 1145 mm

(1 pc chimney strap for the sides of the chimney up to 1200 mm or 2 pcs extended with overlap up to 2200 mm)

Bolt kit, chimney strap 1 turn

Bolt kit, chimney strap 2 turns

## Item no

490038

490040P

490041P

## Accessories

Bracket kit, façade ladder chimney A-220

Bracket, walkway chimney incl. screw

Threaded pole A2 M10 x 250 with nut

Threaded pole A2 M10 x 500 with nut

Threaded pole A2 M10 x 1000 with nut

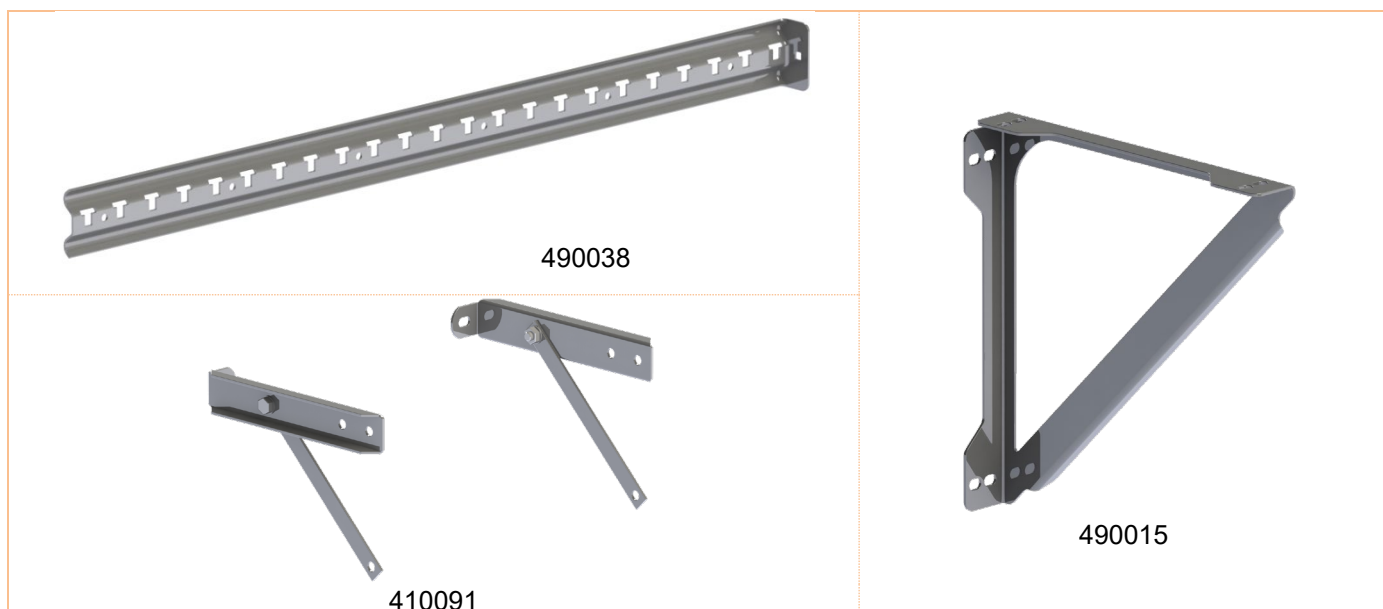
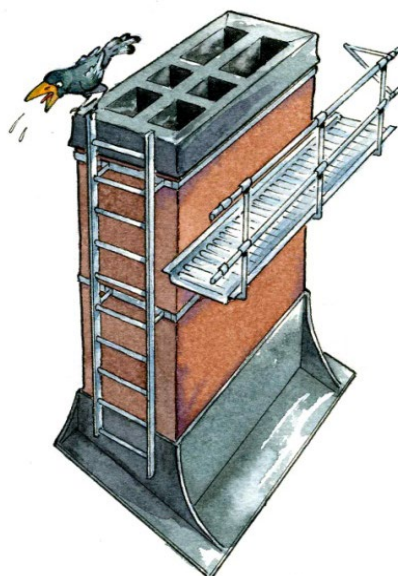
410091

490015

480039

480040

480041



# Touch-up paint

Zinc spray

Spray paint

Spray paint

Spray paint

Spray paint

Grey

RAL 9005 black

RAL 8004 brick red

RAL 3009 dark red

RAL 7011 iron grey

## Item no.

480198

480192

480191

480196

480188

# Mountings

Walkway, ridge/roof foot rail and snow fence, rail roof hatch and anchor loop.

## Roofing tiles on load-bearing roof underlay

Bracket, concrete tiles	<b>420056</b>
Bracket, clay tiles	<b>420057</b>
Foot plate, load-bearing roof underlay	<b>410003</b>
Bolt kit, foot plate	410017P

## Roofing tiles on simplified roof underlay

Bracket, concrete tiles	<b>420056</b>
Bracket, clay tiles	<b>420057</b>
Batten bracket, simplified roofing underlay	<b>410157</b>
Bolt kit, batten bracket 2 pcs	410166P

## Folded sheet metal roof and pre-fabricated panel roofs

Fold mount	<b>410174</b>
Fold mount, pre-fabricated roofing panels	<b>410290</b>
Fold mount, diagonal fold	<b>410251</b>

## Profiled sheet metal roof

Bracket profiled sheet metal roof long	<b>410094</b>
Bolt kit, bracketed profiled sheet metal excl. EPDM 3 pcs	410024P
EPDM bracket profiled sheet metal roof	410173

## Membrane roof

Bracket profiled sheet metal roof long	<b>410094</b>
Bolt kit bracket flat roof 5 pcs	410126P
Bracket, walkway flat roof <18°	<b>430008</b>
Bolt kit bracket walkway flat roof <18° 2 pcs	410226P
Mounting plate, membrane roofs	<b>410115</b>

## Shingle roof

Bracket profiled sheet metal roof long	<b>410094</b>
Bolt kit bracket flat roof 5 pcs	410126P
Bracket, walkway flat roof <18°	<b>430008</b>
Bolt kit bracket walkway flat roof <18° 2 pcs	410226P
Mounting plate, membrane roofs	<b>410113</b>
Bolt kit, mounting plate shingle 2 pcs	410127P

## Sedum roof

Bracket profiled sheet metal roof long	<b>410094</b>
Bolt kit bracket flat roof 5 pcs	410126P
Mounting plate, bitumen membrane	<b>410115</b>
Riser 50 mm, flat roofs	<b>620091</b>
EPDM 180x50x2	410049
Bolt kit M10 x 20 6 pcs (for 6 pcs risers)	420009P

**\*Patent Protected**



For solutions for slate roofs, contact us

# Brackets

Roof ladder and walkway on pitched roofs

## Roofing tiles on load-bearing roof underlay

Bracket roof ladder/walkway on pitch	<b>470195</b>
Strip bracket CONC/CLAY roofing tile	<b>410020</b>
Strip bracket flat roofing tile	<b>410202</b>
Bolt kit roof ladder/walkway load-bearing underlay	470211P

## Roofing tiles on simplified roof underlay

Bracket roof ladder/walkway on pitch	<b>470195</b>
Strip bracket CONC/CLAY roofing tile	<b>410020</b>
Strip bracket flat roofing tile	<b>410202</b>
Bolt kit roof ladder/walkway load-bearing underlay	470211P
Batten bracket simplified roof underlay	<b>410157</b>
Adapter kit roof ladder batten	470212P
Bolt kit batten bracket 2 pcs	410166P

## Folded sheet metal roof and pre-fabricated panel roofs

Fold mount, roof ladder/walkway on pitch	<b>470290</b>
Support roof ladder folded/pre-fab panel roof	<b>470092</b>
Bolt kit, support roof ladder	470091P

## Profiled sheet metal roof

Bracket roof ladder/walkway on pitch	<b>470195</b>
Mounting kit RL/WW on pitch prof. sheet. metal r.	410130P
Extension rail, all-round bracket	<b>470009</b>

## Membrane Roof

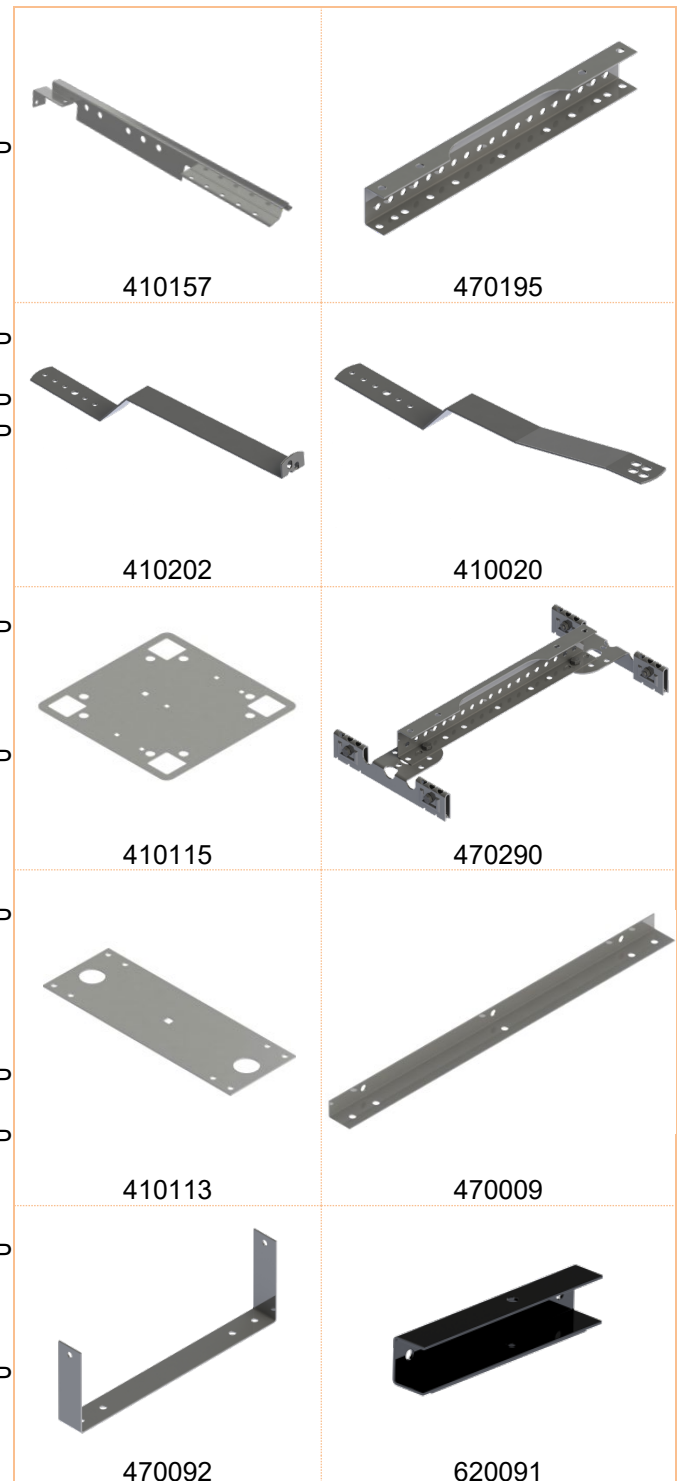
Bracket roof ladder/walkway on pitch	<b>470195</b>
Bolt kit roof ladder/walkway on pitch flat roof	470210P
Mounting plate bitumen membrane	<b>410115</b>

## Shingle roof

Bracket roof ladder/walkway on pitch roof	<b>470195</b>
Bolt kit roof ladder/walkway on pitch flat roof	470210P
Mounting plate shingle	<b>410113</b>
Bolt kit mounting plate 2 pcs	410127P

## Sedum roof

Bracket roof ladder/walkway on pitch	<b>470195</b>
Step bracket kit bracket prof. sheet m.	470210P
Extension rail, bracket	<b>410115</b>
Riser 50 mm, flat roofs	<b>620091</b>
EPDM 180x50x2	410049
Bolt kit M10 x 20 6 pcs	420009P
(for 6 pcs risers)	



For solutions for slate roofs, contact us

# Brackets

Solar panels

## Roofing tiles on load-bearing roof underlay

Solar panel bracket, concrete tiles	<b>410006</b>
Solar panel bracket, clay tiles	<b>410007</b>
Foot plate, load-bearing roof underlay	<b>410003</b>
Bolt kit, batten bracket 2 pcs (for 2 pcs foot plates)	410166P

## Roofing tiles on simplified roof underlay

Solar panel bracket, concrete tiles	<b>410006</b>
Solar panel bracket, clay tiles	<b>410007</b>
Batten bracket, simplified roofing underlay	<b>410157</b>
Bolt kit, batten bracket 2 pcs	410166P

## Folded sheet metal roof and pre-fabricated panel roofs

Fold mount, snow stopper rake	<b>410193</b>
-------------------------------	---------------

## Profiled sheet metal roofs

Solar panel bracket flat roof/profiled sheet metal	<b>410009</b>
Bolt kit bracket snow stopper prof. sheet met. 5 pcs (For 5 pcs solar panel bracket profiled sheet metal)	420193P

## Membrane roof

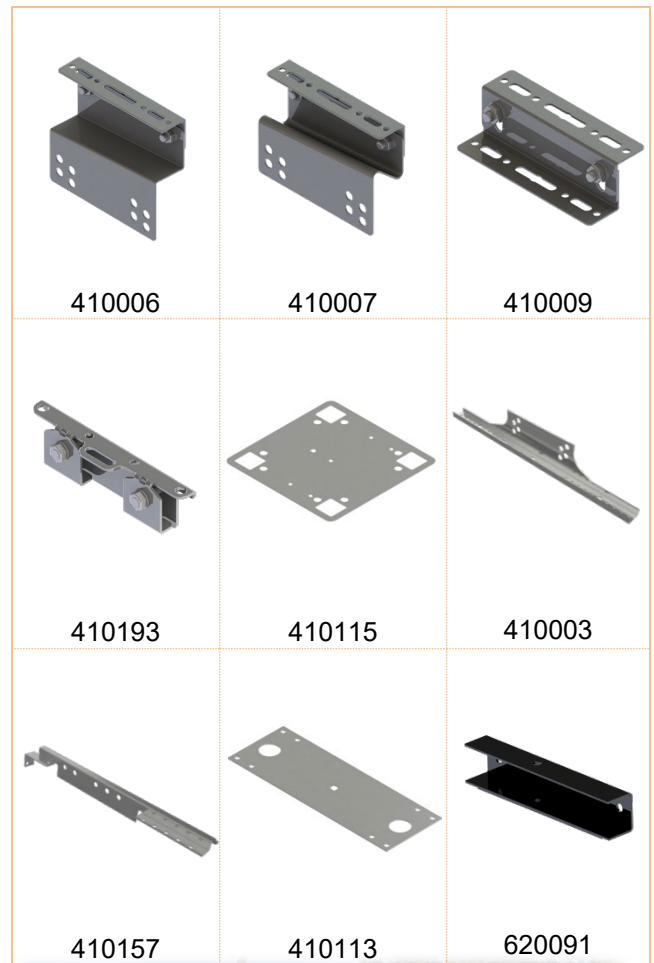
Solar panel bracket, flat roof/prof. sh. met. r.	<b>410009</b>
Bolt kit, bracket walkway flat roofs <18° 2 pcs (For 2 pcs solar panel bracket flat roof)	410226P
Mounting plate, membrane roof	<b>410115</b>

## Shingle roof

Solar panel bracket, flat roof/prof. sh. met. r.	<b>410009</b>
Bolt kit, anchor loop 5 st	410132P
Mounting plate, shingle	<b>410113</b>
Bolt kit, mounting plate shingle 2 pcs	410127P

## Sedum roof

Solar panel flat roof/profiled sheet metal	<b>410009</b>
Bolt kit, bracket walkway flat roofs <18° 2 pcs	410226P
Mounting plate, bitumen membrane	<b>410115</b>
Riser 50 mm, flat roofs	<b>620091</b>
EPDM 180x50x2	410049
Bolt kit M10 x 20 6 pcs (for 6 pcs riser kits)	420009P





# ÅF-pack

Complete safety kit in a carton

## Batten steps on roofing tiles

Batten step 2-bulge CONC C-300 12 pcs + slipguard  
(Non-bent in order to fit 1" and 2" battens)  
Batten step 2-bulge CONC 1" C-C 300 10 pcs  
Batten step 2-bulge CONC 2" C-C 300 10 pcs  
Batten step 2-bulge CLAY / 1-bulge CONC 1" C-C 240 10 pcs  
Batten step 1-bulge CLAY 1" C-C 220 10 pcs  
Batten step 2-b CLAY / 1-b CONC. C-C 240 12 pcs + slipguard  
(Non-bent in order to fit 1" and 2" battens)  
Batten step combi 5 pcs  
(Suits 1 and 2-bulge CLAY and CONC 1" and 2" battens)

\*Only sold in brick red

## Roof step for profiled sheet metal roofs

Roof step, profiled sheet metal roof  
(Comes 15 pcs to a carton)

## Roof ladder

Roof ladder CLAY/CONC load-bearing underlay 1.5 m compl.  
Walkway folded/prefabricated panel, 1.5 m comp  
Roof ladder sheet profiled metal 1.5 m comp

## Ridge rail

Ridge rail, CLAY load-bearing roof underlay 1 m compl.  
Ridge rail CONC load-bearing underlay roof 1 m comp  
Ridge rail CPI 1 m compl.

## Snow fence

Snow fence grating CLAY load-bearing underlay 2.5 m compl.  
Snow fence grating CONC load-bearing underlay 2.5 m comp  
Snow fence profiled sheet folded/prefab 2.5 m comp  
Snow fence profiled sheet metal 2.5 m comp

## Snow stopper

CWL grapple, roofing tiles 50 pcs  
Snow stopper tube, profiled sheet metal flat roofs 3.6 m compl.  
Snow stopper rake folded/prefab 3.6 m comp

## Walkway

Walkway CLAY load-bearing roof underlay 1.2 m compl.  
Walkway, CONC load-bearing underlay roof 1.2 m comp  
Walkway folded/prefab 1.2 comp  
Walkway, profiled sheet metal, 1.2 m complete

### Item no.

450090P  
450091P  
450092P  
550093P\*  
550094P  
550095P\*

450015

450050

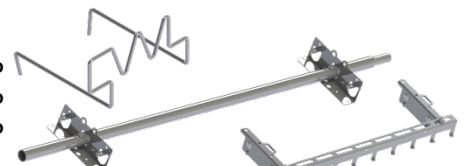
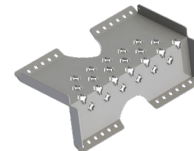
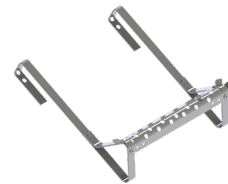
100365  
100369  
100361

420061P  
420062P  
420064P

420145P  
420144P  
420150P  
420140P

450030P  
420154P  
420164P

430126P  
430125P  
430127P  
430124P



## Colour Chart

The following colours are available at no additional cost.



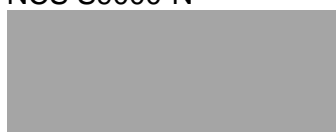
**JET BLACK** \*  
RAL 9005  
NCS S9000-N



**COPPER BROWN**  
RAL 8004  
NCS S5040-Y70R



**CHOCOLATE BROWN**  
RAL 8017  
NCS S8010-Y70R



**WHITE ALUMINIUM**  
RAL 9006  
NCS S2000-N



**GREY ALUMINIUM**  
RAL 9007  
NCS S4502-Y



**IRON GREY** \*  
RAL 7011  
NCS S7005-B20G



**ANTHRACITE GREY** \*  
RAL 7016  
NCS S8005-B20G



**GRAPHITE GREY** \*  
RAL 7024  
NCS S7502-B



**WINDOW GREY**  
RAL 7040  
NCS S3502-B



**OXIDE RED** \*  
RAL 3009  
NCS S6030-Y80R



**OLIVE GREEN**  
RAL 6003  
NCS S7010-G50Y



**PALE GREEN**  
RAL 6021  
NCS S3030-G30Y

Always indicate the RAL number and colour when ordering. Please contact us to inquire about other colours.

RAL converted to the closest NCS  
Lustre rating: 85 ( $\pm 5$ )  
Paint quality: polyester façade  
Colour shifting can occur on clear-coated products.

\* Colours in stock

# Bolt Kits and EPDM

 <p>410017P Bolts for anchor plate</p>	 <p>410024P Bolt kit, bracket prof sheet excl EPDM 3 pcs</p>	 <p>410049 EPDM 180x50x2</p>	 <p>410126P Bolt kit, bracket flat roof 5 pcs</p>
 <p>410127P Bolt kit mounting plate shingle 2 pcs</p>	 <p>410128P Bolt kit bracket prof sheet on flat roof 5 pcs</p>	 <p>410130P* Mounting kit RL/WW on pitch prof. sheet. metal roof</p>	 <p>410132P Bolt kit for anchor loop 5 pcs</p>
 <p>410166P Bolt kit batten bracket 2 pcs</p>	 <p>410173 EPDM, bracket, profiled sheet metal</p>	 <p>410185P Bolt kit mounting plate sheet metal façade 2 pcs</p>	 <p>410186P Bolt kit mounting plate wooden façade 2 pcs</p>
 <p>410226P Bolt kit, bracket walkway flat roof &lt;18° 2 pcs</p>	 <p>420009P Bolt kit M10 x 20 6-pack</p>	 <p>420010P* Locking plate, rail tube/profiled sheet metal</p>	 <p>420012P Bolt kit self-tapping screws 6 pcs</p>
 <p>420170P Bolt kit bracket snow stopper flat roof 5 pcs</p>	 <p>420193P Bolt kit bracket snow stopper on profiled sheet metal roof 5 pcs</p>	 <p>430026P Bolt kit stanchion flat roof 5 pcs</p>	 <p>430034P Bolt kit guardrail walkway/roof ladder</p>

 <p><b>470091P</b> Bolt kit support roof ladder</p>	 <p><b>470135P*</b> Hook kit, façade ladder</p>	 <p><b>470210P</b> Bolt kit roof ladder/walkway on pitch flat roof</p>	 <p><b>470211P</b> Bolt kit roof ladder/walkway load-bearing underlay</p>
 <p><b>470212P</b> Adapter kit, roof ladder, batten</p>	 <p><b>470230P*</b> Adapter kit, guardrail, roof ladder</p>	 <p><b>470260P*</b> Bolt kit roof ladder</p>	 <p><b>470285P*</b> Extension kit, roof/façade ladder</p>
<p><b>480039</b> Threaded pole A2 M10 x 250</p> <p><b>480040</b> Threaded pole A2 M10 x 500</p> <p><b>480041</b> Threaded pole A2 M10 x 1000</p>	 <p><b>480670P</b> Bolt kit pennant 5 pcs</p>	 <p><b>490017P</b> Bolt kit, back guard brace</p>	 <p><b>490031P</b> Bolts for handrails</p>
 <p><b>490040P</b> Bolt kit chimney strap 1 turn</p>	 <p><b>490041P</b> Bolt kit chimney strap 2 extensions</p>	 <p><b>490061P</b> Bracket kit, safety rail</p>	 <p><b>490063P</b> Extension kit safety rail</p>
 <p><b>490075P</b> End plug kit</p>	 <p><b>490137P</b> Mounting plate, wire corner PRO ridge rail</p>	 <p><b>490204P</b> Bolt kit mounting profiled sheet metal roofs 2pcs</p>	 <p><b>490229P</b> Bolt kit M10 x 25 4-pack</p>

*\*Can be ordered in your choice of colours, see colour chart*



## Guarantee Terms in Various Environments

The guarantee entails CW Lundberg replacing faulty products with new, flawless products without delay. If a product has damaged the outer roof or any other part of the roof, CW Lundberg AB will pay compensation equivalent to the cost of buying such material new. The new product is made available to the roof owner at CW Lundberg AB's factory in Mora. Instead of compensating the roof owner with a new product, CW Lundberg AB is entitled to effect repairs or in some other way to rectify the fault in the original product.

The guarantee covers all products made of Zinc magnesium and stainless steel by CW Lundberg AB after 1 May 2016.

### The guarantee is subject to the following conditions:

- The guarantee period is determined based on the environment in which the product is installed; see sample environment in the table below.
- For an installed product, the guarantee only applies on the condition that the installation is done in accordance with CW Lundberg AB's instructions that applied at the time of the purchase.
- The product shall have been maintained in accordance with CW Lundberg AB's instructions that applied at the time of the purchase.
- The product may not have been subjected to abnormal wear and tear or loaded over normal limits and directives stated for roof safety products, e.g., snow fences.
- Claims shall be made to CW Lundberg AB within one month after the fault is discovered or has been made known to the roof owner.
- The right to compensation applies to the owner of the roof on which the product has been installed or will be installed.

### When does the guarantee not apply?

- The guarantee does not apply to damage to products that have occurred have the risks have been transferred from CW Lundberg AB to its customer. The guarantee thus does not apply, e.g., to transport damage after such transfer of risk, or to damage due to faulty or careless storage or other handling by a wholesaler, retailer or end customer. In case of such damage, the retailer is primarily responsible according to statutory regulations.
- The guarantee does not apply if the installation is supplemented with components of a make other than that of CW Lundberg AB.
- The guarantee does not apply to anything other than that which is stated in this document.

Specific guarantee time			Guarantee time (years)
Enamelled products installed on copper roofs.			20
Corrosivity class	Environmental corrosivity	Environmental example	Guarantee time (years)
C1	Very low	Heated areas with dry air and negligible amounts of air contamination, e.g., offices, stores, schools and hotels.	100
C2	Low	Atmospheres with low concentrations of air contamination. Non-heated areas with fluctuating temperatures and humidity. Low frequency of condensation and low concentrations of air contamination, e.g., sport halls, warehouses.	80
C3	Moderate	Atmospheres with a certain amount of salt or moderate air contamination. Urban areas and lightly industrialised areas. Areas with a certain amount of influence from the coast. Areas of moderate humidity and a certain amount of air contamination from production processes, e.g., breweries, dairies, laundries.	60
C4	High	Atmospheres with a moderate amount of salt or considerable air contamination. Industrial and coastal areas. Areas with high levels of humidity and large quantities of air contamination from production processes, e.g., chemical industries, indoor swimming pools, shipyards.	40
C5-I	Very high (Industrial)	Industrial areas with a high degree of air humidity and an aggressive atmosphere. Areas with almost permanent condensation and large amounts of air contamination.	20
C5-M	Very high (Marine)	Coastal and offshore areas with large quantities of salt. Areas with almost permanent condensation and large amounts of air contamination.	20

Corrosivity classes according to EN ISO 12944-2:1998



---

---

---

[illegible]

--	--

---

---

---

[illegible]

--	--

---

---

---

[illegible]

--	--

[www.cwlundberg.com](http://www.cwlundberg.com)



On our web page, we have gathered all of our products, installation instructions, films and associated documents in order for you to be able to create a safe roof on which to be!

**Use the Calculator - Calculate material consumption and prices directly on the homepage.**

**CALCULATOR - CALCULATE YOUR ROOF →**

Brochures and the most recent documentation is available for download and printout on the home page, or else you can contact us and we will e-mail/send it to you.



CWL0058

CWL0059

CWL0053

CWL0062

**CWL**  
ROOF SAFETY MORA SWEDEN

CWL0058-18 GB

• CW Lundberg Sp. z o.o. • ul. Strefowa 9 • 58-200 Dzierżoniów • Polska •  
• +46 71 881 15 00 • [www.cwlundberg.com](http://www.cwlundberg.com) • [info.pl@cwlundberg.com](mailto:info.pl@cwlundberg.com) •